



Merry Christmas & Happy New Year!



**Expires
2/29/12**

SNOWEX[®]

MANAGE SNOW AND ICE WITH ULTIMATE EFFICIENCY!

**NO ENGINES, NO PULLEYS,
NO SPROCKETS, NO BELTS,
NO CHAINS!**

Installation available on request.

Contact your local branch for information and pricing.



V-BOX IN-BED SPREADERS



DUMP BOX SPREADERS



TOW BEHIND SPREADERS



PRO SPREADERS

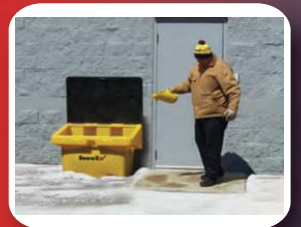


UTILITY SPREADERS

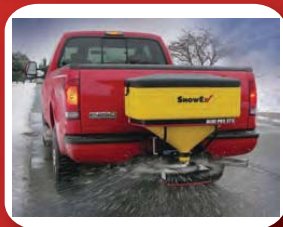
**ORDER BEFORE
FEBRUARY 29th, 2012 AND
SAVE 10%***

**Quote order code
ATS022912 when ordering.*

**Call your local sales rep for more information.*



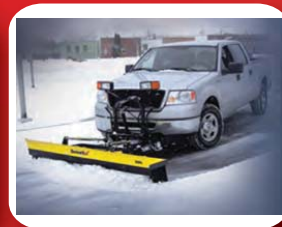
SALT BOXES



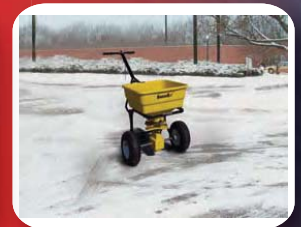
TAILGATE SPREADERS



LIQUID DE-ICING SPREADERS



SNOW BROOMS



WALK-BEHIND SPREADERS

SAVE FUEL!
✓ 12-volt ELECTRIC
✓ LIGHTWEIGHT



From V-box, tailgate and walk-behind spreaders to snowbrooms and salt boxes, the comprehensive SnowEx line offers unmatched polyethylene durability and versatility for all your snow and ice control applications

Tailgate Spreaders starting from: **\$915.00** (SR110)
V-Box In-Bed Spreaders starting from: **\$5,210.00** (SP3000)

5-IN-1 Bomber Jacket / BK122



\$99.95/ea

- 100% Polyester green
- Removable sleeves and fleece
- 3M™ Reflective tape
- Meets CSA Z96-02 Class 2 Lvl 2
- Sizes: Small - 3XL

* Also Available in Orange

UPM® Pavement Repair Material

- Step 1 - Sweep the area to be repaired, removing loose debris.
- Step 2 - Shovel or pour UPM® into the hole.
- Step 3 - Compact the patch and it's ready for traffic.

\$25.95 / 50lb. bag

LED Road Flares



- 16 super bright red LEDs are visible up to 1/2 mile
- 9 flash patterns including: SOS Rescue (Morse Code)
- Powerful magnet to attach to metal surfaces
- Made of durable materials, crush proof, corrosion proof, Waterproof and submersible to 33 feet
- No smoke, no flame, no Perchlorate (non-toxic)
- 60 hours of use on a full charge

\$24.95 /ea.

Scrapor Blade Markers



(3/4 Inch Diameter)

24" \$24.00/pair (SD24F)

36" \$36.00/pair (SD36F)

48" \$48.00/pair (ST48)

"The Flexibles"



Steel Culvert Marker

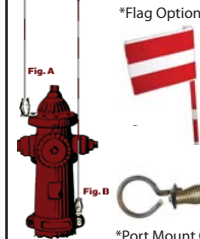


- Includes two (2) red 3M High-intensity reflective patches
- 1" x 1/4" flat bar base will clamp and bolt on edge of most culverts
- CMS3-SPRING model c/w built-in spring mechanism
- Dimensions: 3/8" x 36" c/w 2 1/2" x 3 1/2" 18-gauge
- Mounting hardware not included

CMS3-Spring \$28.95 /ea.
CM-3 Solid Marker \$17.00/ea.

Fire Hydrant Marker

\$34.95/ea.
(7' model w/ flat bracket "A")



- The Hydrfinder™ is a fiberglass shaft hydrant marker, field tested with a variety of bracket options, & spring made of wound galvanized spring steel.
- The one-piece staff, coil spring & bracket ("L" or flat) combination is 3/8"x84" tall
- Day & night visibility via 6" reflective tape.
- Corrosion free & UV resistant, 360° flexibility.
- Mini-Flags, fluorescent colours & custom decals are also available – extra charge.

Snow Fence & T-Rail Posts

(L300)
Heavy Duty
Snow Fence
48"x50' roll
\$155.99/roll
(reg. \$175.00)



6' Studded T-Rail Posts \$9.95/post (reg. \$11.55)
unpainted, 5.70 lbs.

TIP: Place 1 T-Post every 6' of fence

Snow Poles

- Mark culverts and drains
- Locate junction boxes
- Mark fire hydrants
- Set snowmobile courses
- Mark cross-country ski trails
- Support banners and signs
- Secure snow fencing
- Delineate lift lines
- School Crosswalk Flag Staff



Model 2549 (8') \$26.20/ea
Fluorescent Orange in stock
Custom colours available on request

Winter Cones

18" Cone



\$17.50/each
(TC-18-BEN)

- EVA material (Ethylene Vinyl Acetate)
- Fluorescent orange colour
- Custom stenciling available*
- Custom reflective cone collars available

*NOTE: Imprinting and silk screening are available. 50 cone minimum per order. Lead time required. Please contact us for applicable set-up fees and charges. Only available in black ink

Salt & Sand Spinners Polyurethane Salt & Sand Spreaders - Spinner Mounting Hubs



20" Spinner w/ hub \$320.00

20" spinner w/o hub \$240.00
(Other sizes available)

Please indicate clockwise or counter clockwise when ordering

Solar Barricade Light



- Uses High Intensity LEDs.
- 1000 meter viewing distance.
- Operates for 5 nights on a single charge!
- Maintenance Free.

\$41.90/ea.

Compact Windstand



Model 3612DLK \$209.95/ea.
*STAND ONLY

- Constructed of aircraft aluminum alloy
- Quick & easy one-person set-up without tools
- Kick-release legs simplify set-up and handling
- Dual-spring base resists twisting and turning of sign in high wind gusts
- Adjustable telescoping legs stabilize sign stands on curbs or uneven terrain
- Easy handling and convenient storage
- Available with 36" or 48" sign faces